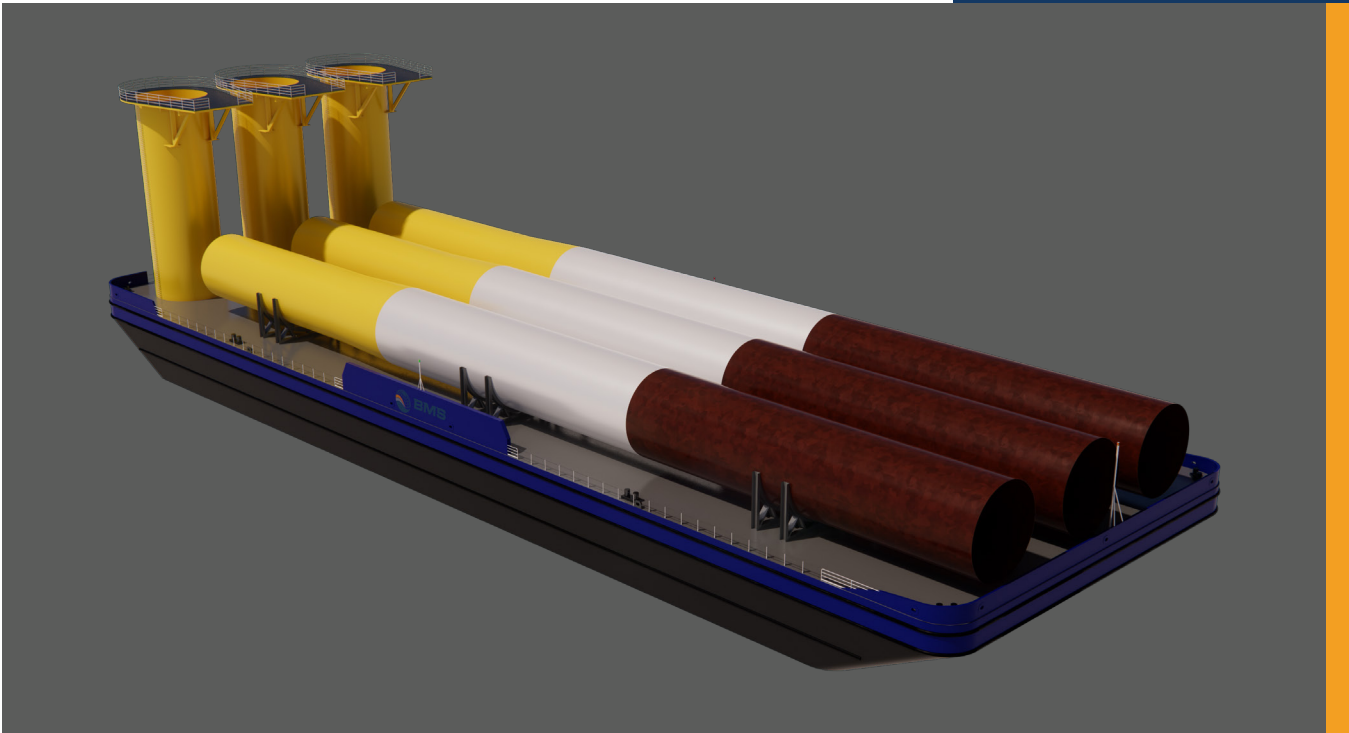




**BMS**  
Baker Marine Solutions



## Wind Feeder Barge BMS 1840

U.S. designed for the offshore wind market.

Easily constructed at any yard with the capacity.

Easily scalable to meet the requirements of the project.

Easy to load and offload materials.

Onboard power generation.

**Design  
Deck Barge**

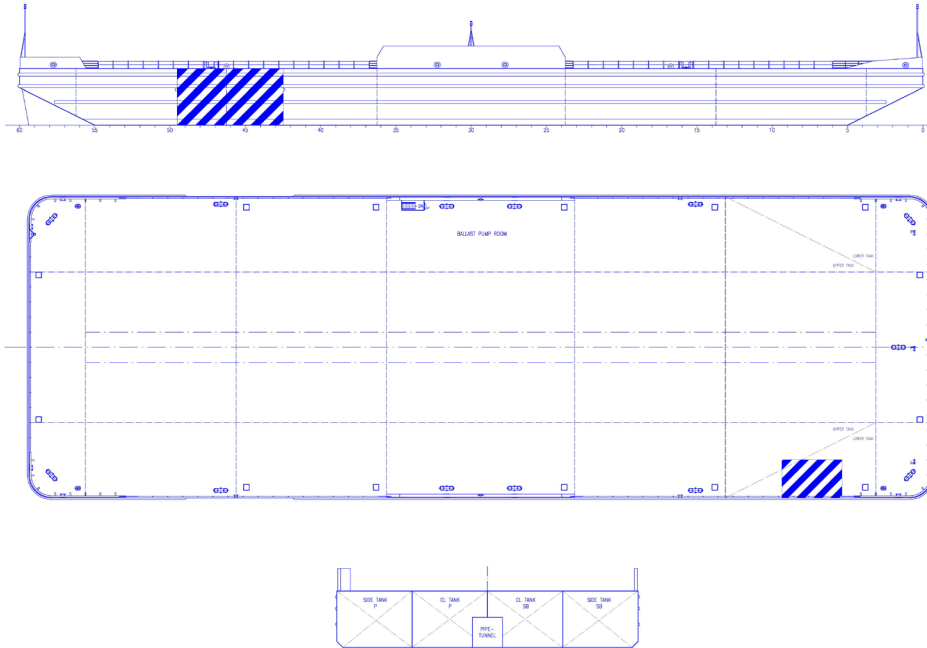
MAIN DATA

**400 ft**  
Length overall

**132 ft**  
Breadth

**20 ft**  
Draft

**25 ft**  
Depth



|                            |  |                        |
|----------------------------|--|------------------------|
| <b>Type Classification</b> | Deck Barge<br>ABS 1A Barge                                   |                        |
| <b>Dimensions</b>          | Length overall   | 400 ft                 |
|                            | Breadth  | 132 ft                 |
|                            | Draft  | 20 ft                  |
|                            | Depth  | 25 ft                  |
| <b>Equipment</b>           | 1 x Pump Room<br>2 x Winches<br>3 x 200 kW Diesel Generators |                        |
| <b>Capacities</b>          | Deadweight   | 20,000 LT              |
|                            | Deck Loading   | 8 LT/ ft <sup>2</sup>  |
|                            | Deck Area  | 51,420 ft <sup>2</sup> |

## Design Deck Barge

### MAIN DATA

|                |        |
|----------------|--------|
| Length overall | 400 ft |
| Breadth        | 132 ft |
| Draft          | 20 ft  |
| Depth          | 25 ft  |

